

THE INSTRUMENT LANDING SYSTEM (ILS) *Explained*

A simplified guide for the instrument helicopter student



The Instrument Landing System (ILS) Explained

A simplified guide for the instrument helicopter student.

Matt Johnson

Copyright © 2013 by Matt Johnson. All rights reserved. Published by MattJohnsonHeliCFI.com. No part of this publication may be reproduced, transmitted, transcribed, stored in a retrieval system, or translated into any language in any form by any means without the written permission of the author/publisher. For information on getting permission for reprints and excerpts, contact us in writing at the address below.

The information in this book is distributed on an “As Is” basis, without warranty. While every precaution has been taken in the preparation of the book, the author/publisher shall not have any liability to any person or entity with respect to any loss or damage caused or alleged to be caused directly or indirectly by the instructions contained in this book. Throughout this book, trademarks are used. Rather than put a trademark symbol in every occurrence of a trademarked name, we state that we are using names in an editorial fashion only and to the benefit of the trademark owner with no intention of infringement of the trademark. Additionally, any aeronautical charts used in the book are strictly *for example only* and are NOT for actual navigational use.

ISBN-10: 0979263816
ISBN-13: 978-0-9792638-1-1



MattJohnsonHeliCFI.com
PO Box 237
Lebanon, OH 45036

Find us on the World Wide Web at: **www.MattJohnsonHeliCFI.com**
To report errors, please send a note to matt@mattjohnsonhelicfi.com

Editor, Cover/Interior Design: MaryJo Regier

First Edition. Printed and bound in the United States of America.

Contents

List of Figures iv
Tables v
Many Thanks v
About This Guide vi

THE INSTRUMENT LANDING SYSTEM (ILS) EXPLAINED

ILS components and approach types

7

THE FOUR ILS COMPONENTS

Localizer, glide slope, marker beacons, approach lighting systems

9

ALTERNATIVE ILS COMPONENTS

Compass locators, ILS errors to consider

23

FLYING THE ILS APPROACH

On the ground, in the air; four A's procedure checklist

29

THE APPROACH PLATE

Briefing strip, plan view, profile view, minima section, airport view, TIMTS procedures checklist

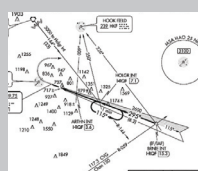
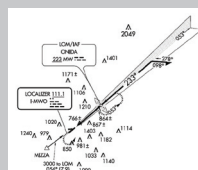
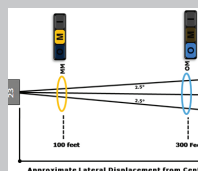
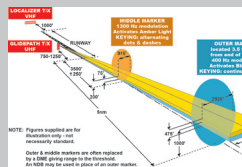
34

FINAL PHASES OF THE ILS APPROACH

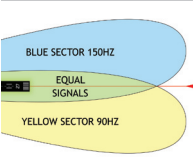
Final approach fix, course reversal procedure, procedure turn, GPS modes, going "missed"

40

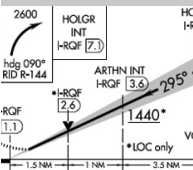
About the Author 48
Recommended Reading 49
Index 50



List of Figures



CATEGORY	
⊖-ILS 21L	
S-LOC 21L	160
CIRCLING	160 1117 (1)



- FIG 1** The ILS System **9**
- FIG 2** Localizer Identification Box **10**
- FIG 3** End-Of-Runway Localizer Antenna **10**
- FIG 4** Frequencies in Equal Amounts... **11**
- FIG 5** Localizer CDI Indications **11**
- FIG 6** Localizer Beam **12**
- FIG 7** Localizer Course Displacement **13**
- FIG 8** Glide Slope Needle Indications **14**
- FIG 9** Glide Slope Signal **14**
- FIG 10** Glide Slope Antenna **14**
- FIG 11** ILS Marker Beacon Indications **16**
- FIG 12** Illuminated Visual/Light Indicators **18**
- FIG 13** ALS Type Symbols **19**
- FIG 14** ALS Type Symbols from NACO Approach Chart Booklet **20**
- FIG 15** Inoperative Components and Visual Aids Table **20**
- FIG 16** Airport Diagram **21**
- FIG 17** Minimum Sections **22**
- FIG 18** Terms/Landing Minima Data **22**
- FIG 19** Compass Locator **23**
- FIG 20** Locator Outer Marker **24**
- FIG 21** ILS Approach With No Marker Beacons **26**
- FIG 22** ILS Approach Chart **27**
- FIG 23** ILS Holding Position Sign **28**
- FIG 24** ILS Critical Boundary Sign **28**
- FIG 25** GPS Mode **32**
- FIG 26** VLOC Mode **32**

FIG 27	Briefing Strip Area	34
FIG 28	Plan View	35
FIG 29	Profile View	35
FIG 30	Minimums Section	36
FIG 31	Airport View/Sketch	36
FIG 32	Approaching Final Approach Fix	40
FIG 33	Course Reversal Procedure	40
FIG 34	Arriving at IAF at Onida	41
FIG 35	The Procedure Turn	41
FIG 36	Verification of VLOC Mode	42
FIG 37	GPS Indicating SUSP Mode...	46
FIG 38	Garmin™ 430 Unsuspended...	46

Tables	
TAB A	ILS System
	Components 7
TAB B	ILS Approach
	Types 8
TAB C	FOUR A's
	Procedures
	Checklist 30
TAB D	TIMTS
	Procedures
	Checklist 37

Many Thanks

I would be remiss if I didn't extend a very special "thank you" to several friends and professionals for taking the time to review this information for accuracy and relevance.

Without further adieu, many thanks go out to **Shawn Coyle**, author of what I consider to be the "encyclopedia" for helicopter pilots in the form of his classic tome, *Cyclic & Collective*.

I also want to thank another aviation-education legend,

Rod Machado. Rod has written numerous "must have" aviation textbooks.

In addition, thanks go to **John Zimmerman**, Vice President of the infamous **Sporty's Pilot Shop**.

Much appreciation goes to **Pat Shaub**, friend, professional pilot and instructor.

And finally, much appreciation goes to **MaryJo Regier**, an absolute professional in the area of editing, layout and graphic design.

About This Guide

First and foremost, I hope this guide gives you just that: Guidance. It has been written in simple, concise and practical terms. That is my hope anyway!

This guide is compiled from a collection of notes and handouts assembled for my past instrument-helicopter students. Learning to fly helicopters can, at times, be challenging enough. The pursuit of the instrument-helicopter rating adds a new level of knowledge and hopefully, a new level of understanding about many flight dynamics.

This guide will provide the reader with a basic overview of the Instrument Landing System and its various associated components. The material has been written for you, the helicopter pilot, by a helicopter pilot and instructor. Sadly, the majority of training guides, manuals and texts are normally geared for our fixed-wing brethren. Finally, a guide just for you!

