

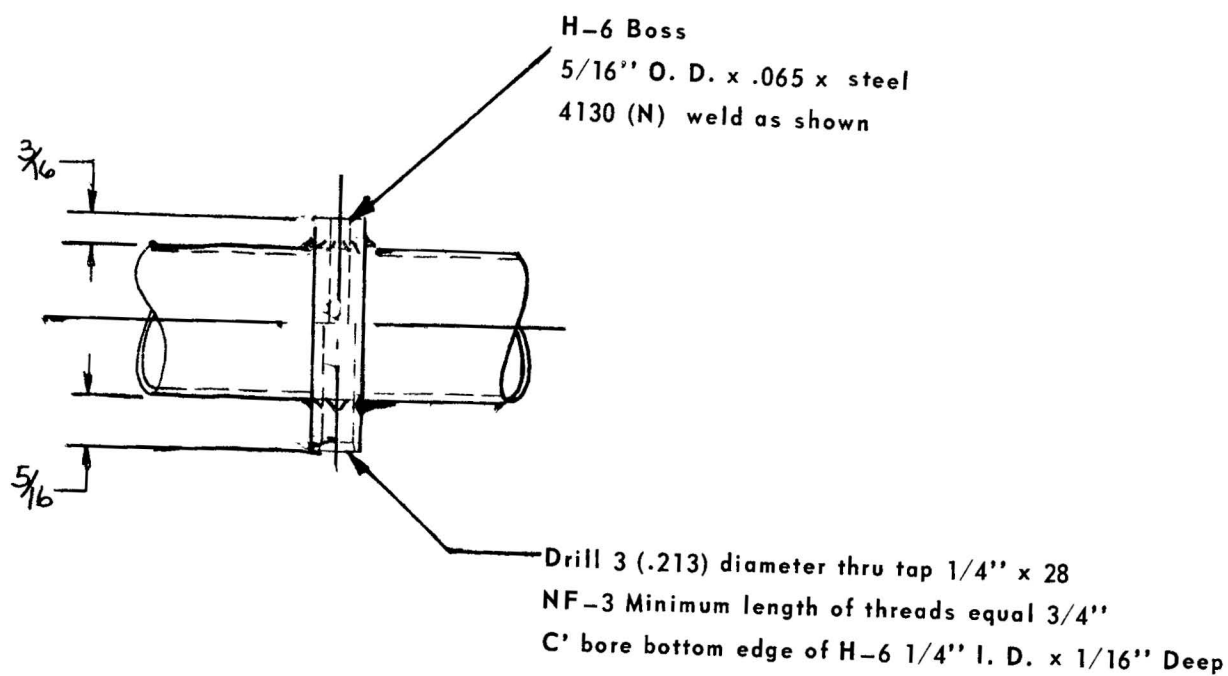
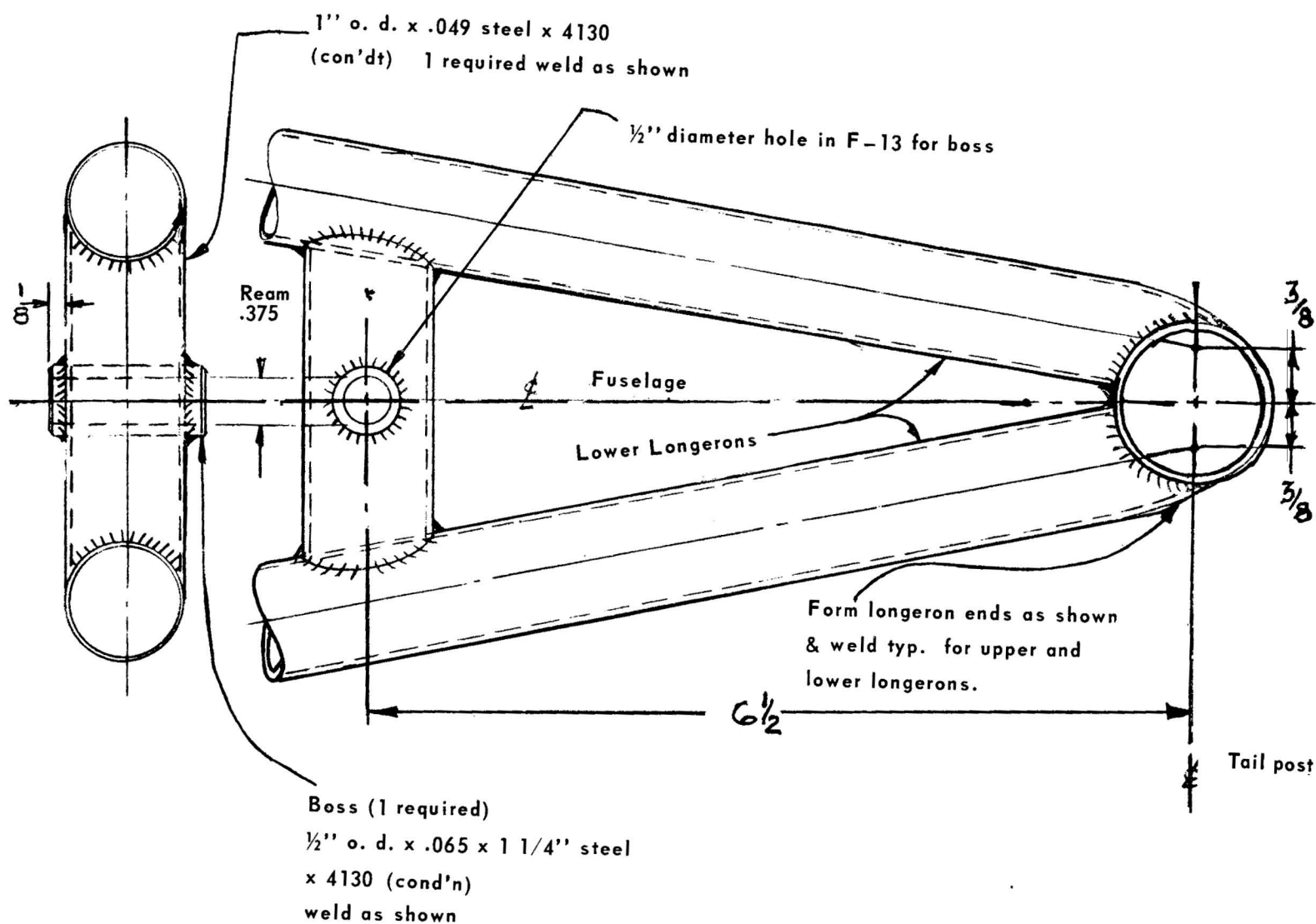
Aircraft Detail Design Manual

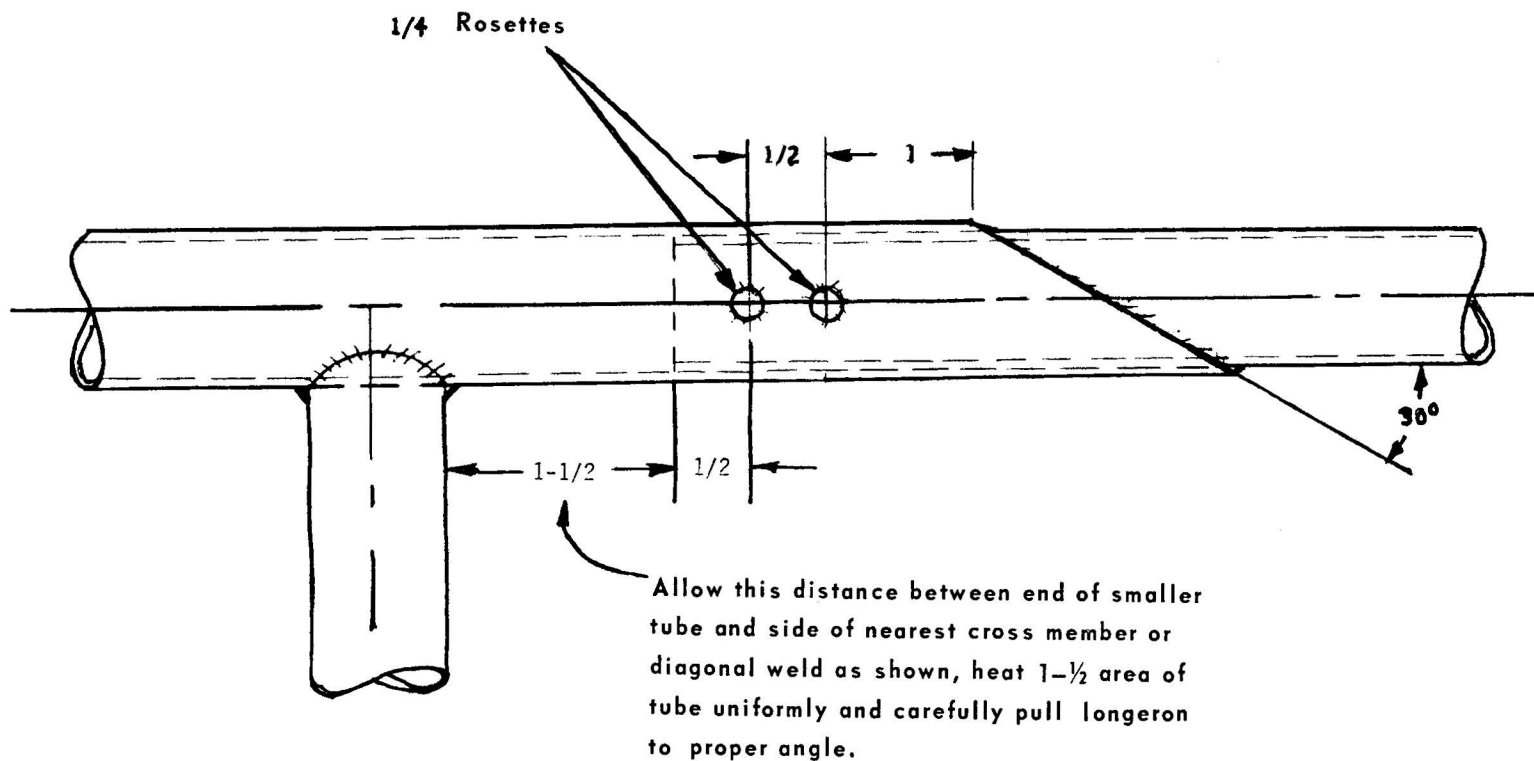


3rd Edition

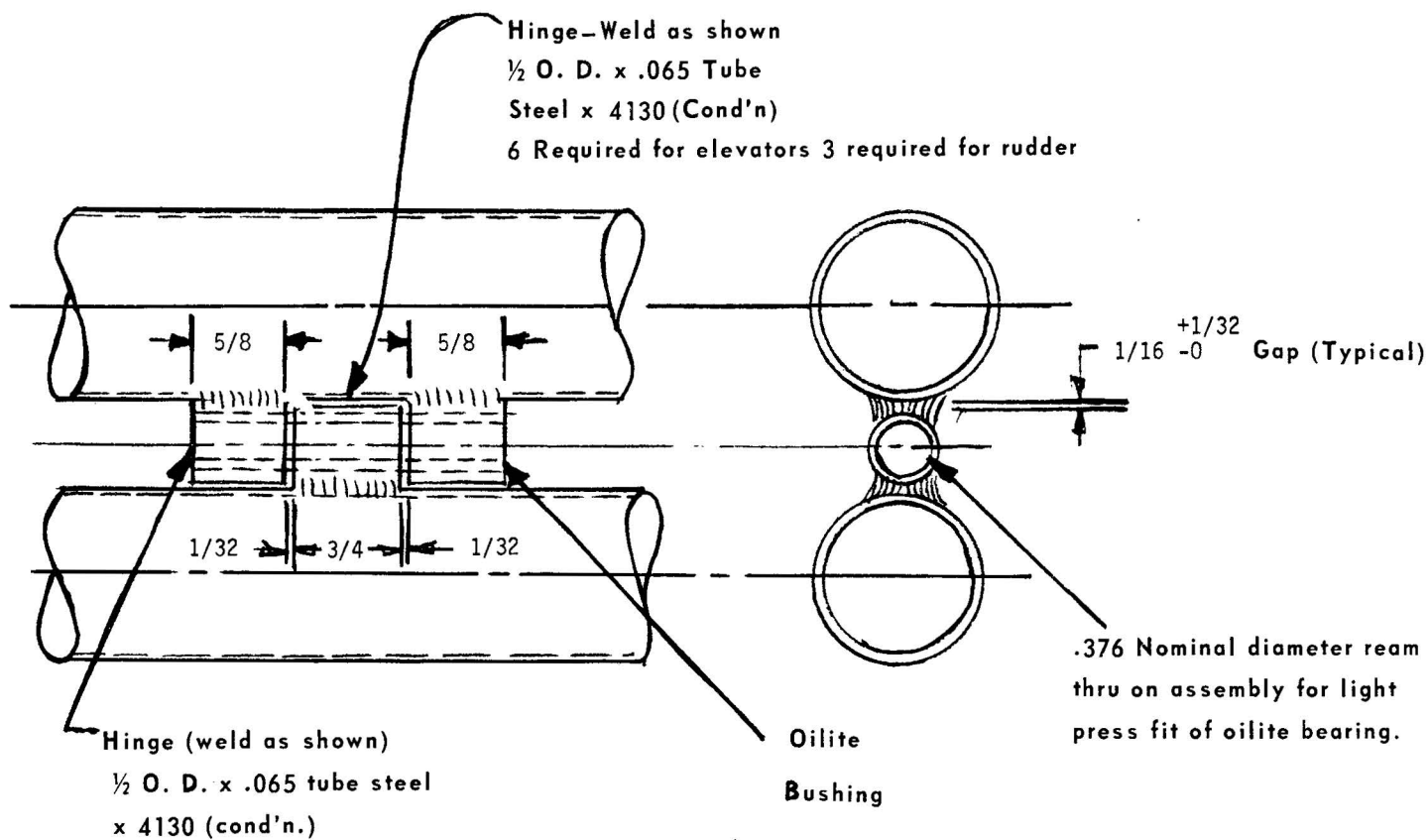
I n d e x

DETAIL DESIGN ILLUSTRATIONS	1
WING DESIGN	59
ENGINEERING TABLES	66
AIRCRAFT HARDWARE SPECIFICATIONS	79

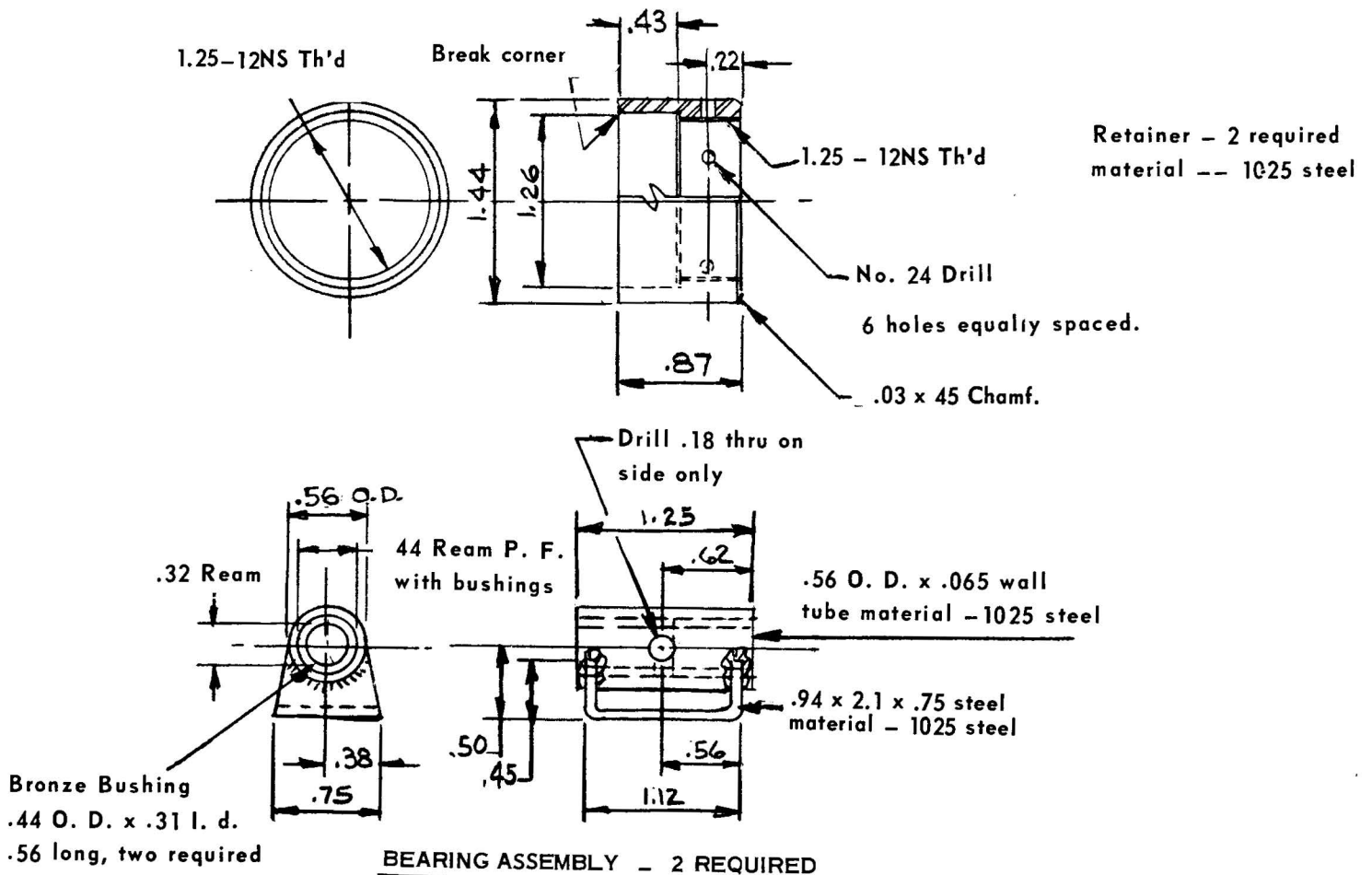
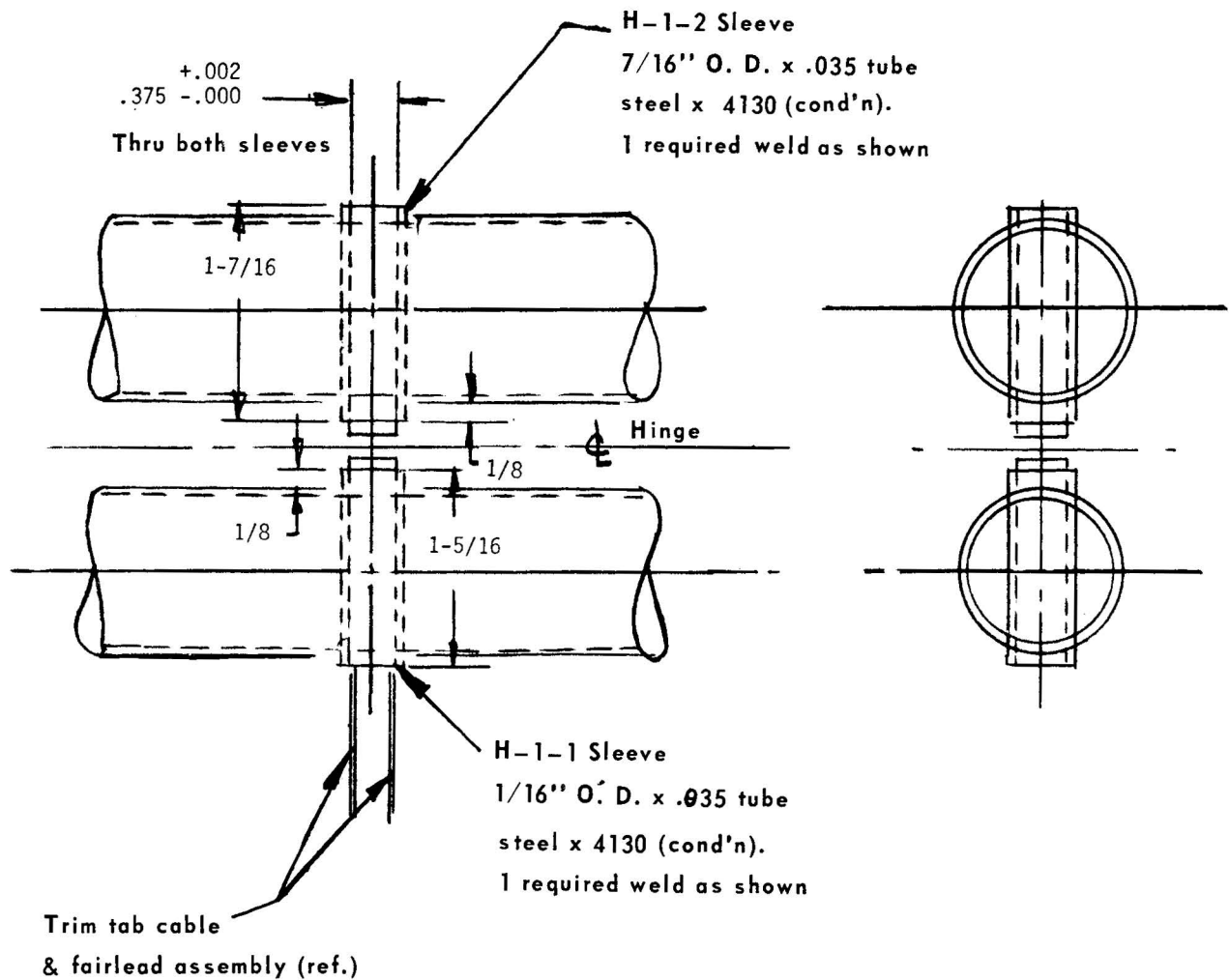


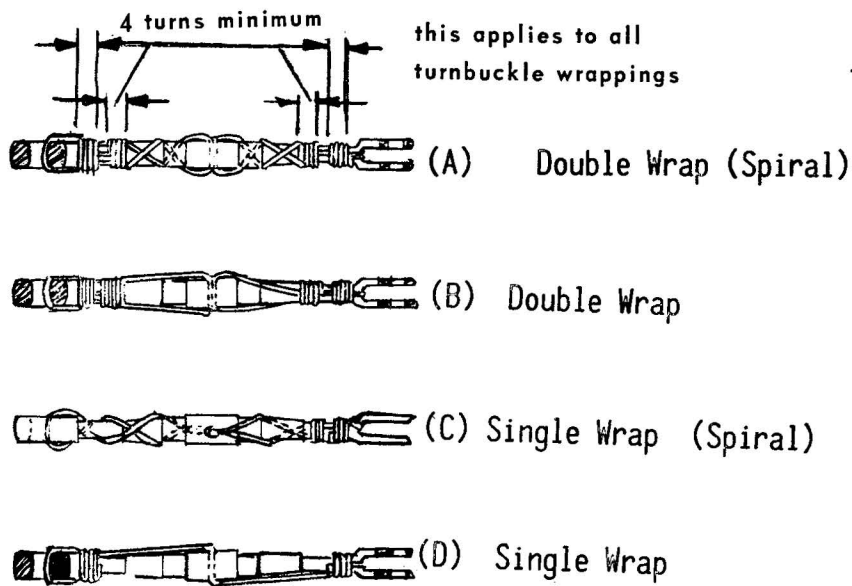


↑
DETAIL SHOWING TYPICAL LONGERON SPLICE

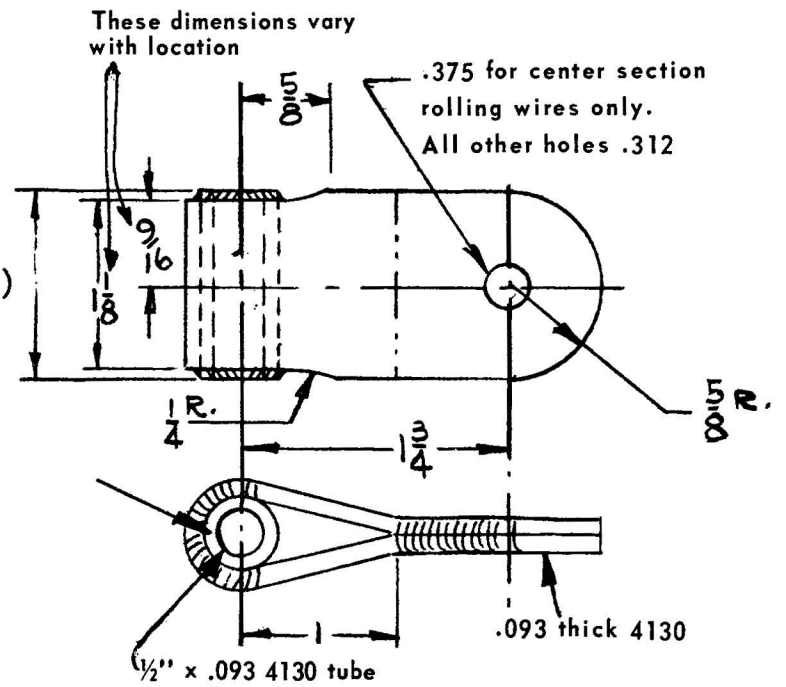


↑
TYPICAL HINGE DETAIL FOR BOTH HORIZONTAL AND VERTICAL TAIL

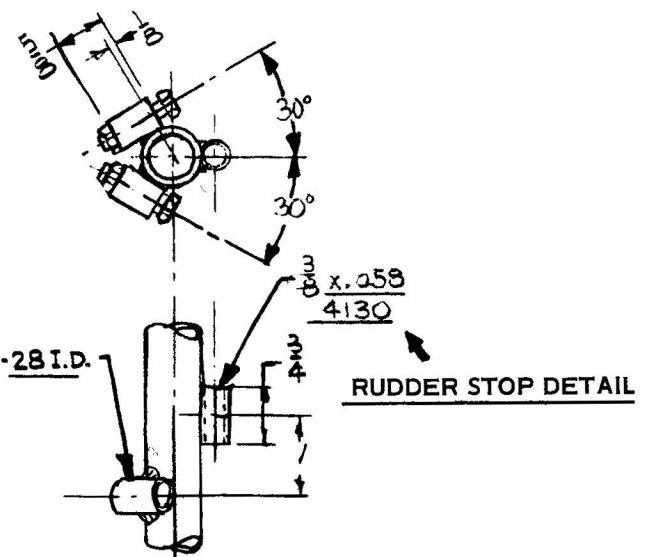
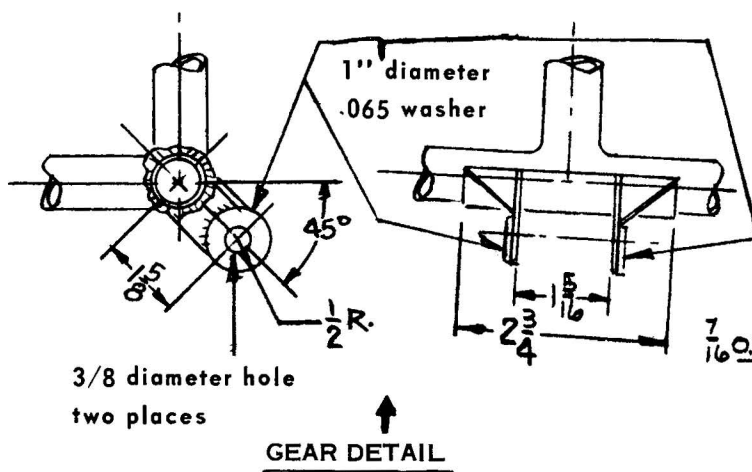
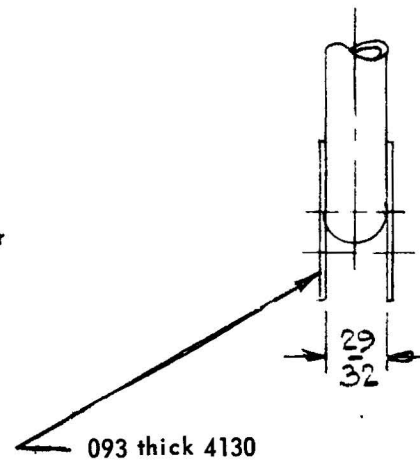
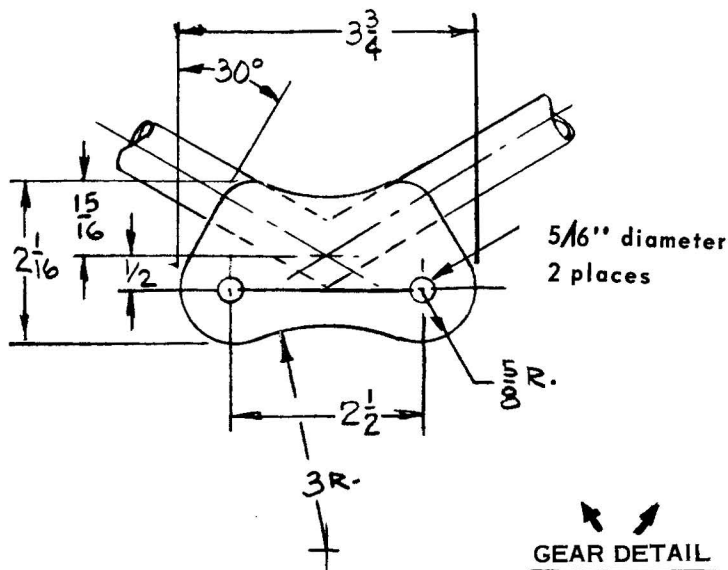


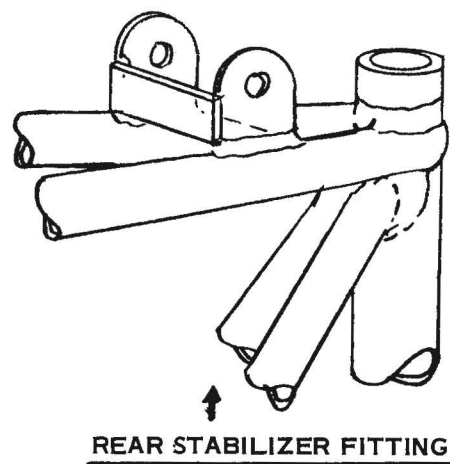
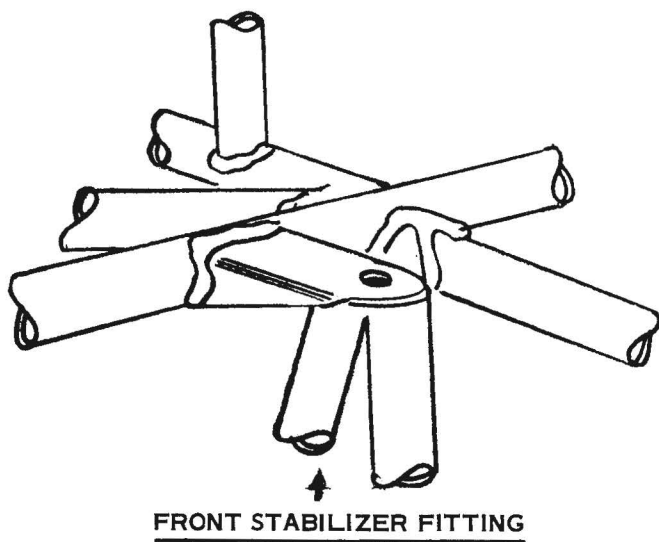
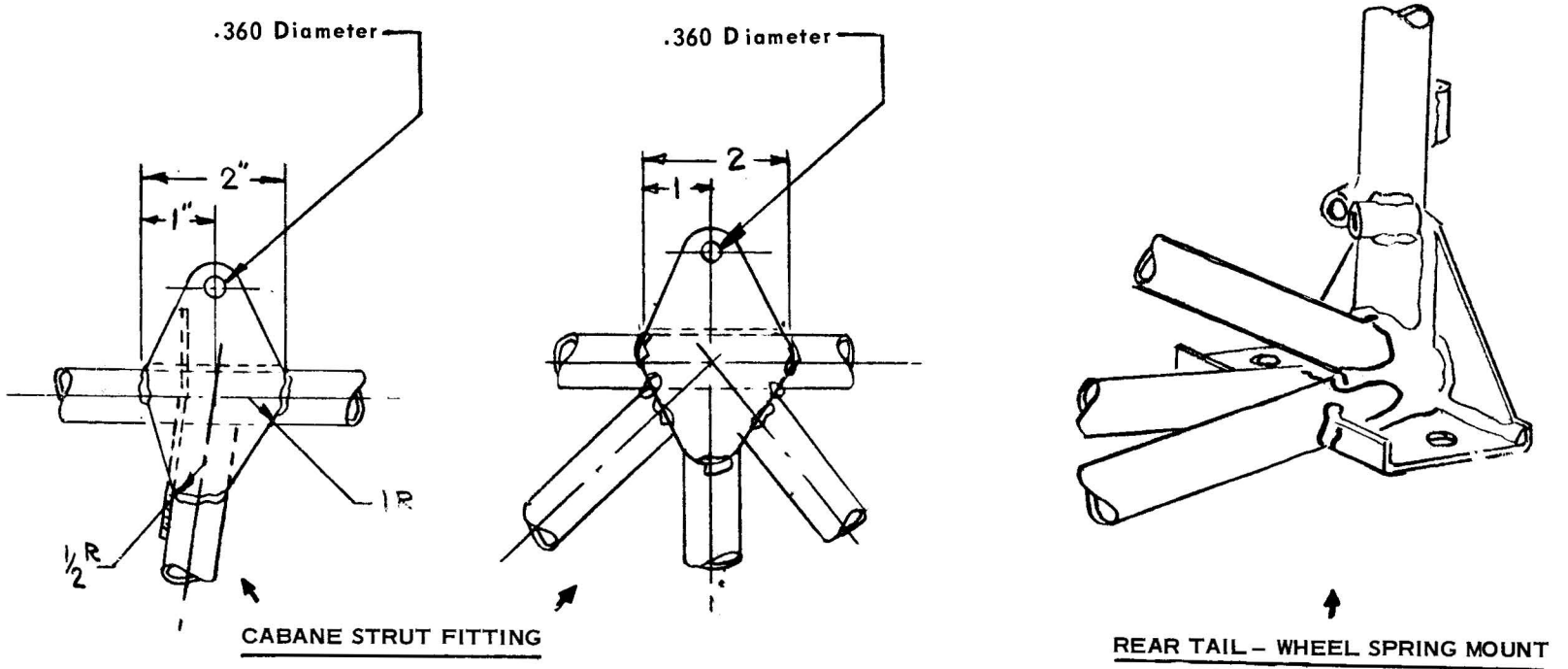
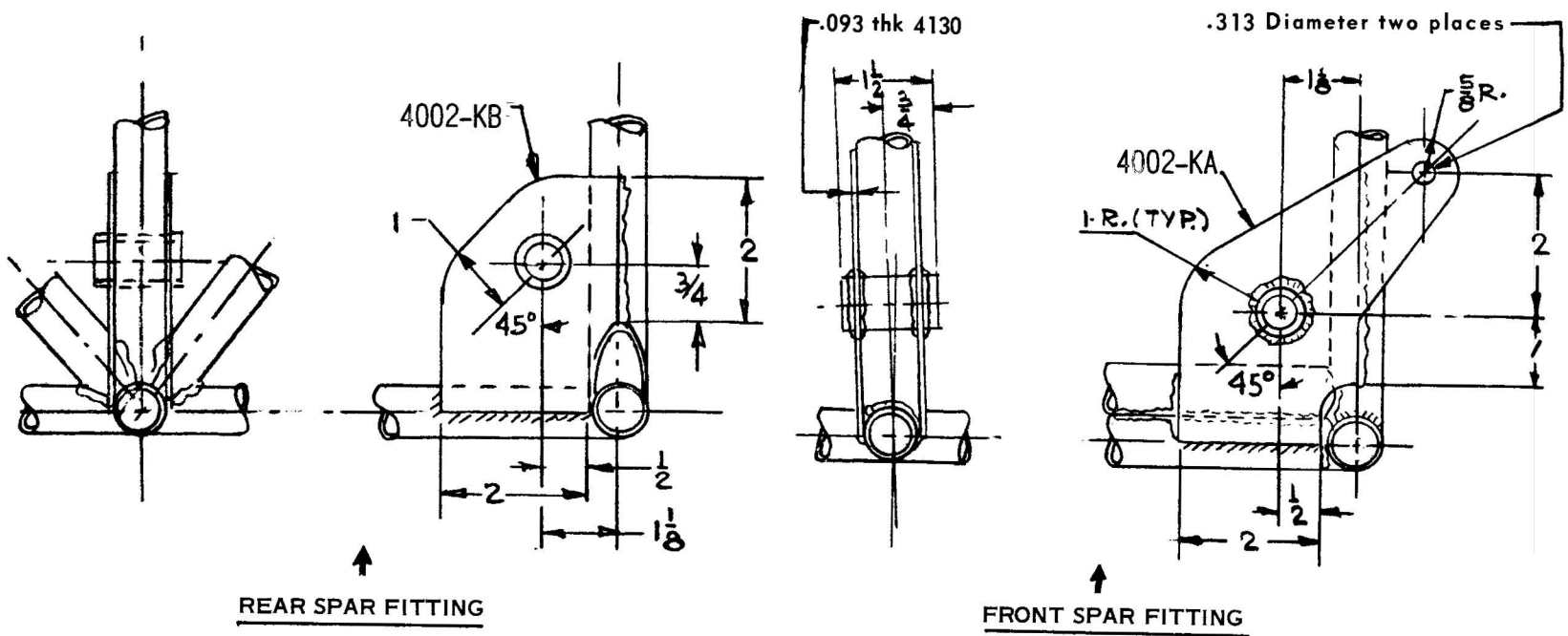


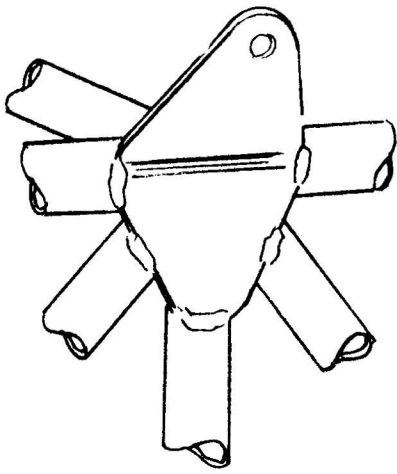
TURNBUCKLES ↑



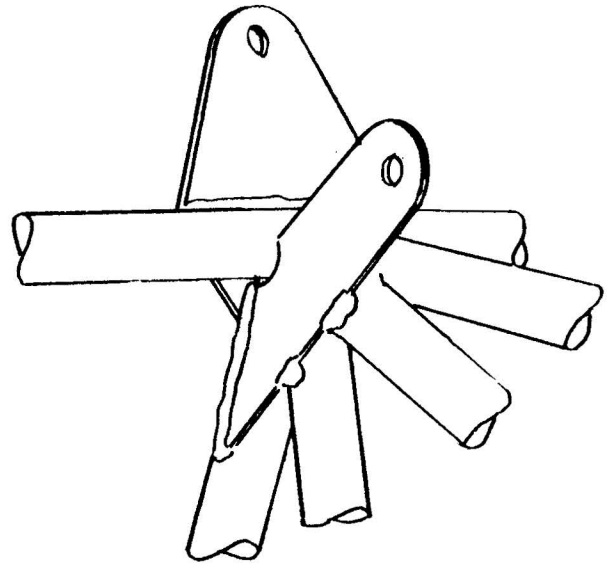
2004-4 14-Required



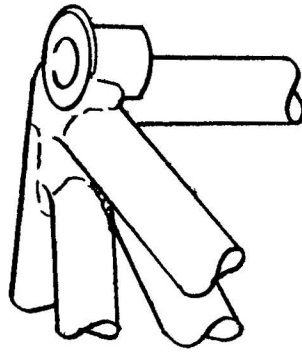




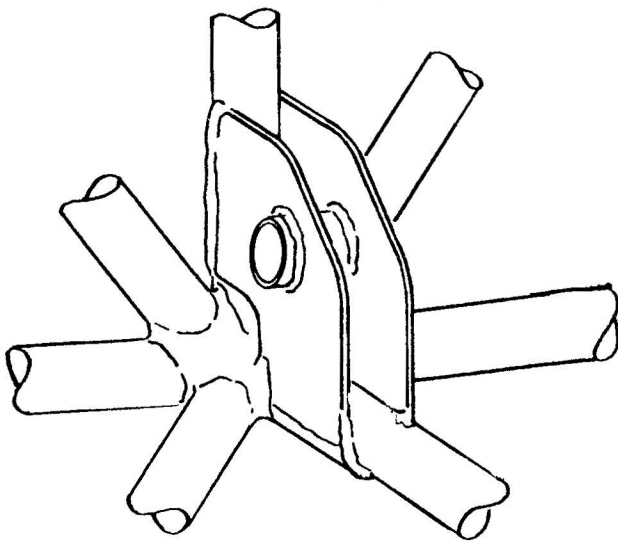
REAR CABANE STRUT FITTING



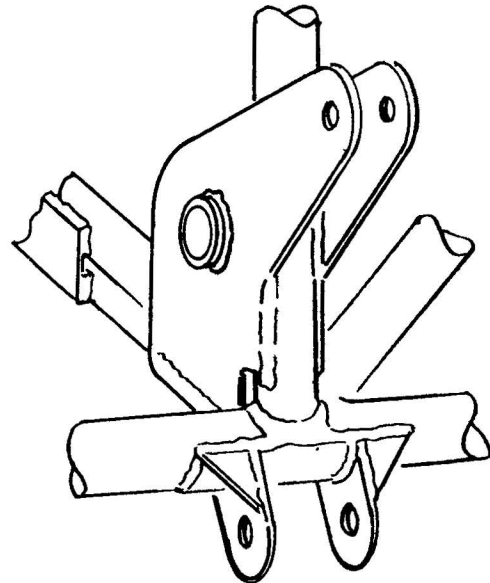
FRONT CABANE STRUT AND ROLLING WIRE FITTING



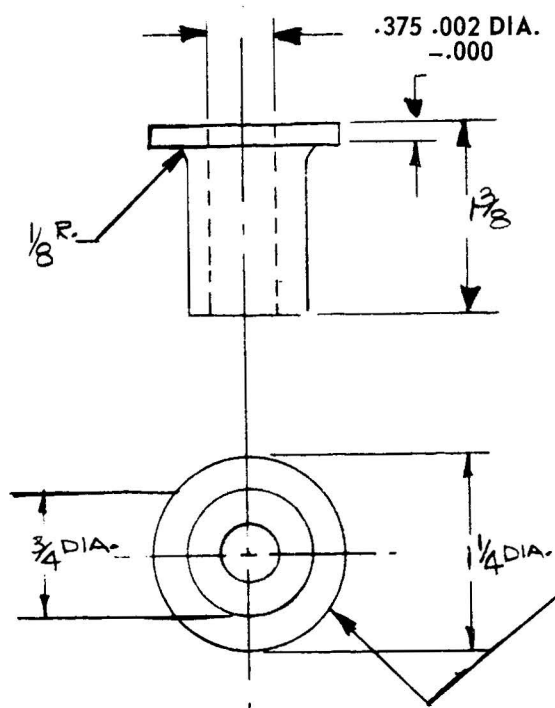
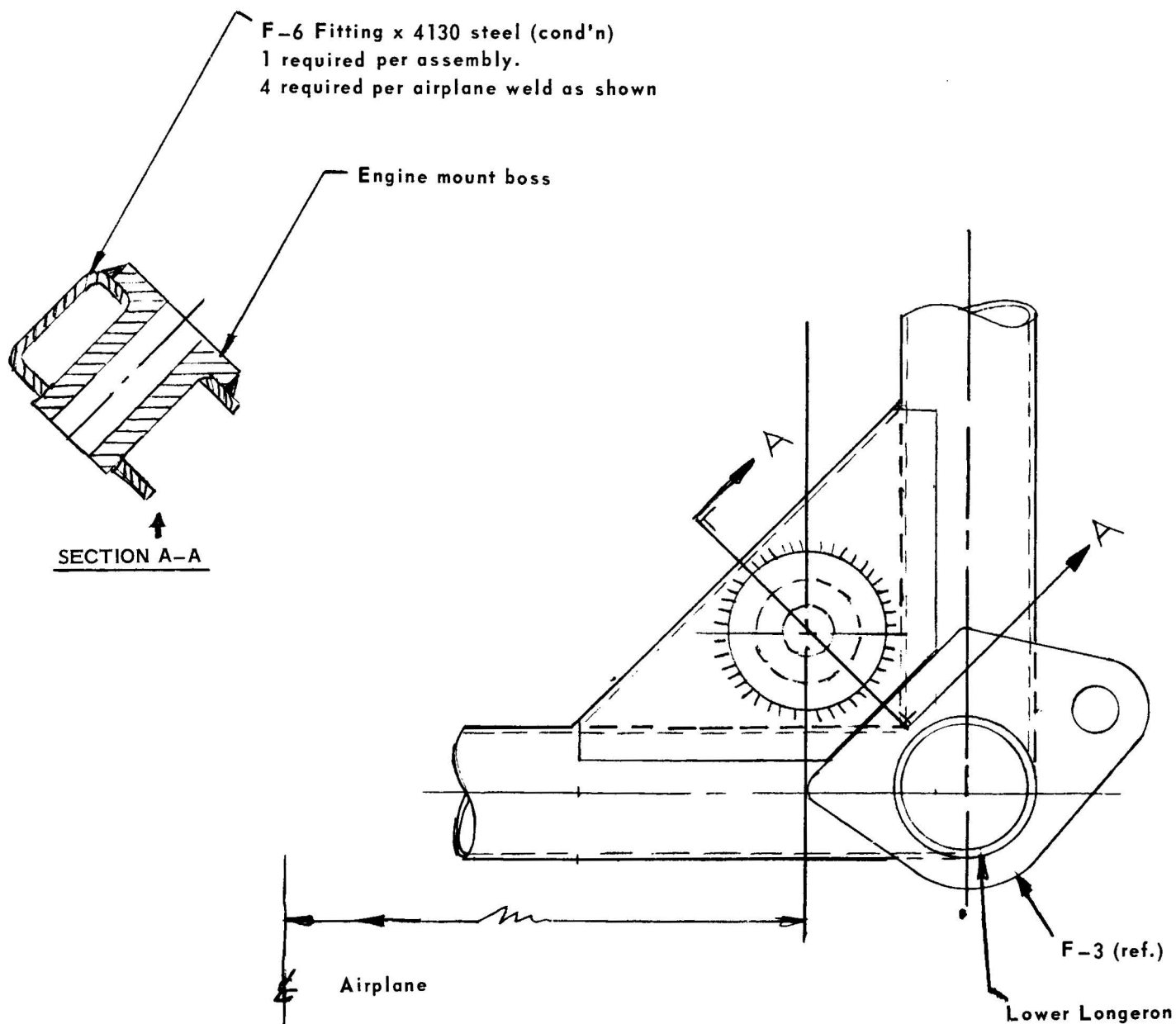
TYPICAL ENGINE MOUNT FITTING



REAR SPAR FITTING

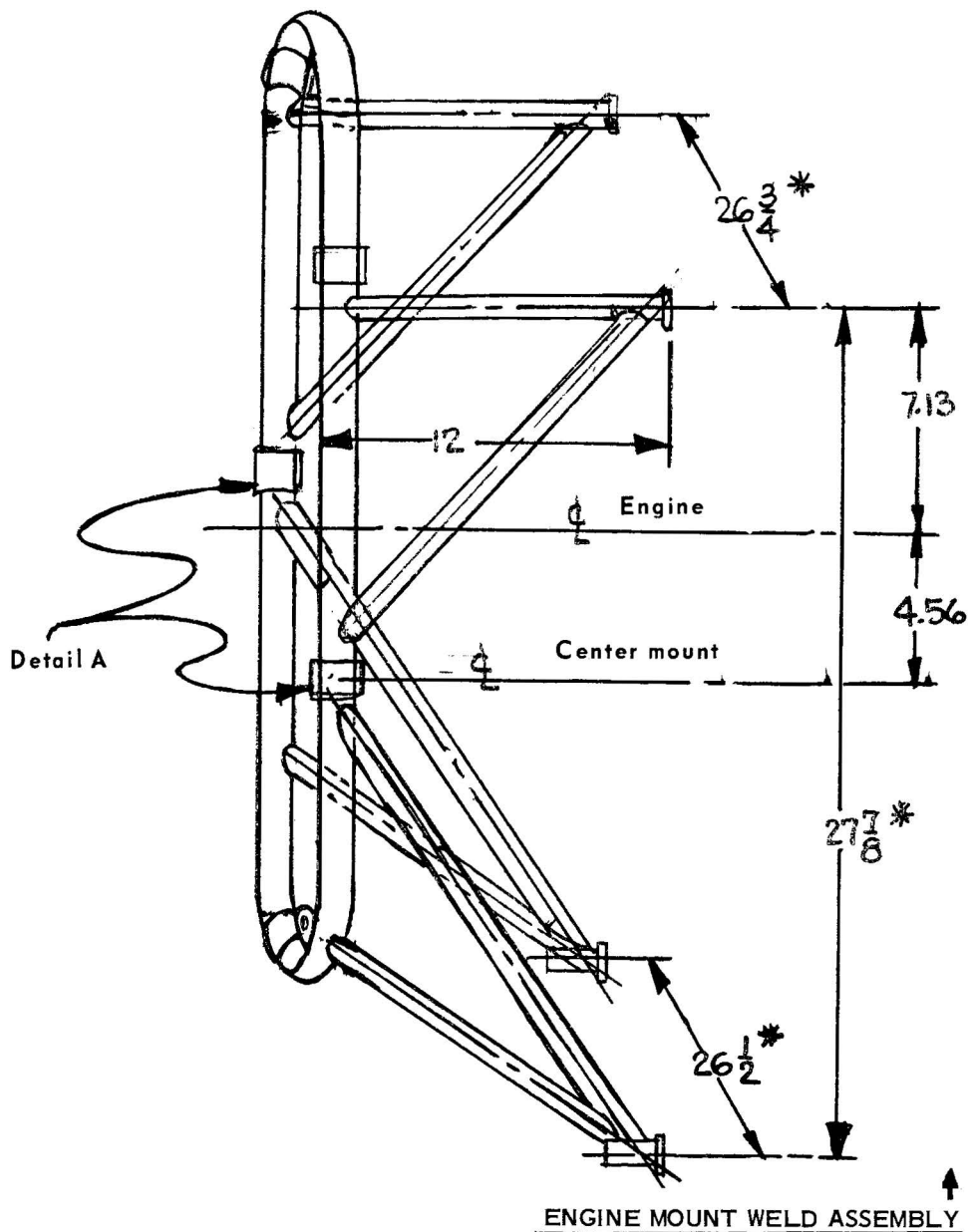


FRONT SPAR REAR LANDING GEAR FITTING



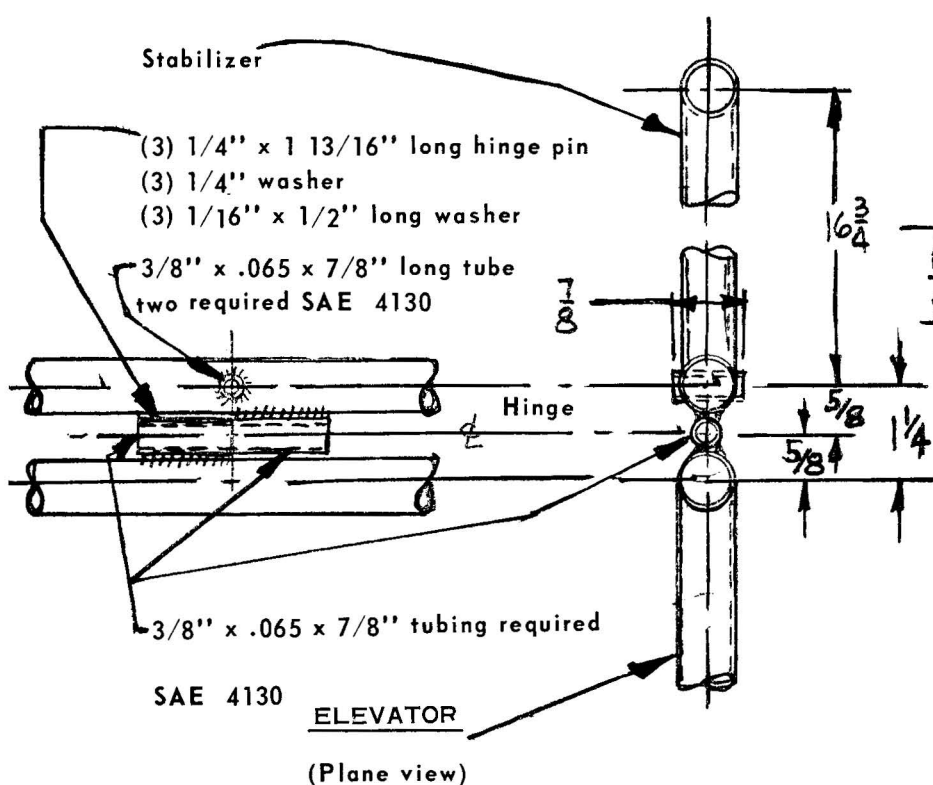
MOTOR MOUNT BOSS

Motor mount boss
1 1/4" diameter x 1 3/8" x 4130
steel (cond'n)
four required

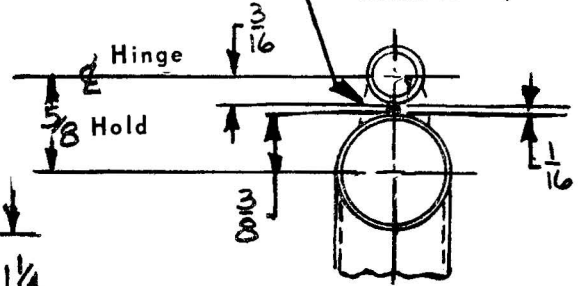


For lycoming O-435 and -11 engines

1. Dimensions shown with (*) are to be matched to fuselage mounts.
2. All tubing to be steel x 4130 cond'n.
3. Ring may be salvaged from surplus L-5 Engine Mount.



NOTE Use 1/16" diameter weld rod between hinge tube and frame tube (as shown)



ENLARGED VIEW (FULL SIZE)
OF HINGE TUBE INSTALLATION